

ROLLS INSTALLATION

INSTALLATION INSTRUCTIONS: ROLLS WITH BOLON GREEN WELD

THE MATERIAL

The material is a woven vinyl product backed with glass fiber reinforced vinyl.

Since the material is a woven product, its structure is naturally irregular.

The material is not approved for wet rooms.

REQUIREMENTS

1. The subfloor must be clean, dry and free from cracks. Any adhesion impairing spots of paint, oil, etc. and any dust should be removed. Please note that asphalt, spillages of oil, impregnating agents and felt pen markings can cause discolouration.
2. Necessary damp-proofing must be in place to prevent harmful moisture coming into contact with the flooring. Follow national rules and regulations with regard to moisture in floor structures. In the absence of such rules and regulations, use the following as guidelines.
3. When laying this product, the RH in any subfloor of normal structural concrete must not exceed 85%. This value only applies to construction moisture. Measuring must always be performed by specially trained personnel.

4. Subfloors of sheet material are assumed to contain an 8% moisture ratio (which corresponds to 40% RH at +20°C), so that no movement occurs that may subsequently cause damage. In the event of any piping in floors, pipes must be laid so that the flooring material is not continuously exposed to temperatures higher than 30°C, as otherwise discolouration and other changes to the material can occur. This also applies to areas with underfloor heating.

PREPARATIONS

1. Carefully remove all dust and loose particles. When using leveling compound, it is important to achieve the necessary strength and evenness. For best result ± 5 mm /2m and $\pm 1,2$ mm/0,25m or better is recommended.
2. For highly or unevenly absorbing subfloors primer can be used. The primer must be completely dry before installation begins. Installation on existing floor coverings of plastic/linoleum/wood must be assessed on a case by case basis depending on the subfloor condition, installation method and other conditions. With painted subfloors, there is a risk of discolouration.
3. Before installation the material, adhesive and subfloor must be allowed to adjust to room temperature, i.e. a temperature of at least +18°C - 25°C. The relative air humidity must be 30-60 %. Higher levels of air humidity result in longer drying times and a risk of blistering.

BOLON

Bolon HQ: Industrivägen 12, 523 90 Ulricehamn, Sweden
bolon.com | info@bolon.com | +46 321 530 400

INSTALLATION INSTRUCTIONS: ROLLS WITH BOLON GREEN WELD



INSTALLATION

1. Use adhesives designed for vinyl flooring. Normal consumption is around 4 m²/liter of adhesive for absorbent subfloors and around 5 m²/liter for non-absorbent subfloors.
2. Always employ sticky adhesive even for absorbent subfloors. This is to avoid bubbles due to the flooring being stiff and not adhering firmly to the adhesive if it is wet glued. Make sure the entire floor covering is in contact with the adhesive by using a joint roller. Installation time depends on various things, including type of subfloor, absorption capacity of subfloor, temperature and air humidity in the room.
3. Use pencil for any markings. If material from many rolls needed, use rolls from same batch and use them in number order.

MISCELLANEOUS

1. If the material is being installed on stairs, mouldings must be used.
2. Wheels on office chairs must be polyamide (hard type, designed for textile flooring).
3. Furniture must have feet of teflon, polythene, stainless steel or similar.
4. Some types of rubber found in wheels of trolleys, entrance mats, etc. can cause discolouration in the form of migration. This type of discolouration cannot be removed.

INSTALLATION INSTRUCTIONS: ROLLS WITH BOLON GREEN WELD

PROCEDURE STEP BY STEP

1. Cut the required lengths.
Since the floor change appearance depending on light, direction of installation and the viewer position, consider incoming light and traffic areas when installing. Avoid joints across the material. This is particular important for striped or patterned articles where it is not possible for the stripes to be centered with each other across the entire width. The lengths must be laid in the same direction (see arrow on reverse).

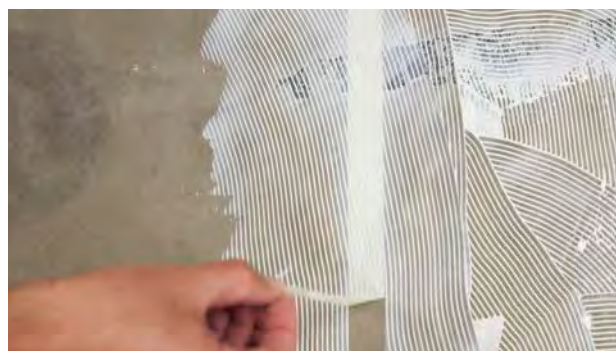
2. The lengths are overlapped by approximately 4 cm and then double-cut in order to achieve a tight seam. For patterned articles, the overlap can have a specific dimension. See page 4 - 5.



3. Roll/fold the first sheet. Mark the position of the joint on the subfloor.



4. Roll/fold over the adjoining sheet and put masking tape on the sub-floor along the middle of the joint.



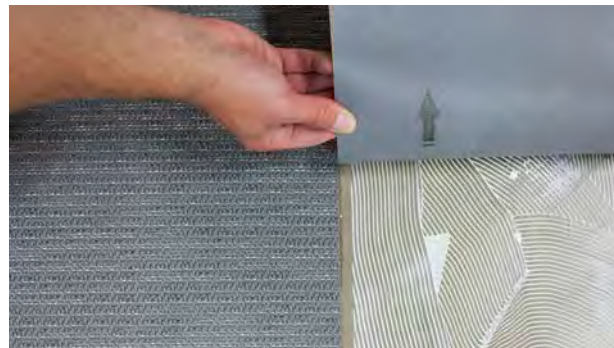
5. Glue the subfloor and remove the masking tape while still reachable.



6. Straighten out the first sheet.



7. Add Bolon Green Weld along the cross-section area of the sheet. Avoid overflow on floor covering surface.



8. Straighten out the adjoining sheet.

9. Gently soak up surplus Bolon Green Weld with a micro-fibre cloth.

10. Use a joint roller to ensure good contact between sub-floor and floor covering.

11. Repeat steps 3-10 for the rest of the sheets.

For more information, see the Bolon Green Weld box.

INSTALLATION INSTRUCTIONS: ROLLS WITH BOLON GREEN WELD

COLLECTIONS WITH NO SPECIAL CUTTING*

*In some articles the seam will be seen in the patterns and this is intentional.

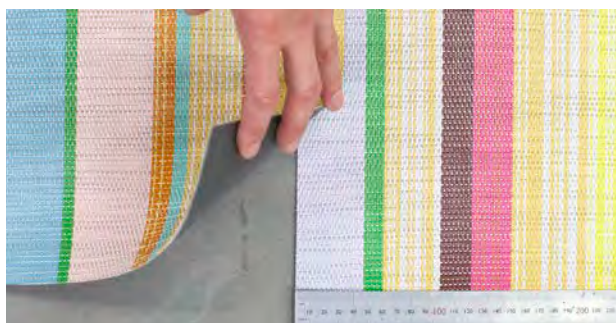


1. Overlap 2 sheets of flooring 4 cm and double cut.



- 2.

MISSONI HOME TRINIDAD



1. Overlap 2 sheets of flooring 4 cm and double cut. *Please note that the cut should be made in the yellow and purple fields.*



- 2.

GRAPHIC CHECKED



1. Overlap 2 sheets of flooring and adjust so that the repeated pattern is approx. 130 mm. Double cut where the stripe is 65 mm.



- 2.

GRAPHIC HERRINGBONE



1. Overlap 2 sheets of flooring and adjust so that the repeated pattern is approx. 180 mm. Double cut where the stripe is 90 mm.



- 2.

INSTALLATION INSTRUCTIONS: ROLLS WITH BOLON GREEN WELD

BOLON BY YOU DOT



1. Overlap 2 sheets of flooring 4 cm and double cut. Make sure do not cut in the big dots.



- 2.

BOLON BY YOU STRIPE

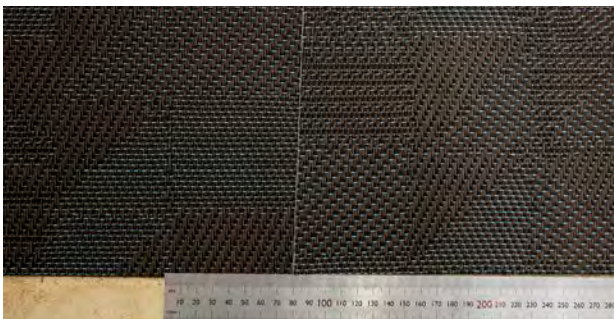


1. Overlap so the pattern over two stripes are about 6 cm. Cut so the stripe is around 3 cm.



- 2.

BOLON BY YOU GEOMETRIC

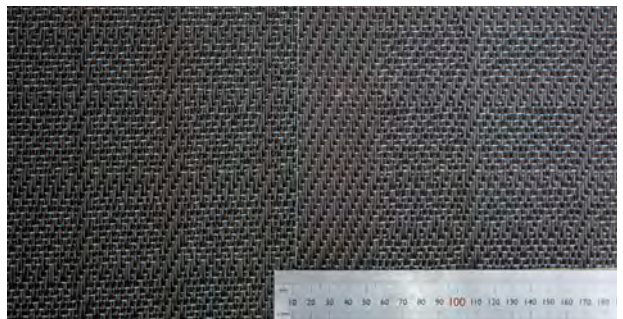


1. Overlap 2 sheets of flooring so the pattern repeat of two side-by-side squares is 15 cm. Cut so one square is about 7,5 cm.



- 2.

BOLON BY YOU GRID



1. Overlap the entire smooth section over the mottled. Cut so that the smooth section is around 1.5 cm. The width of the mottled section is of secondary importance.



- 2.

TILES/PLANKS INSTALLATION

INSTALLATION INSTRUCTIONS: TILES/PLANKS

THE MATERIAL

The material is a woven vinyl product backed with glass fiber reinforced vinyl.

For acoustic tiles with the felt backing, the material is a woven vinyl product backed with glass fiber reinforced vinyl and a sound insulation felt layer consisting of 90% recycled polyester fibers from PET-bottles.

Since the material is a woven product, its structure is naturally irregular.

The material is not approved for wet rooms.

REQUIREMENTS

1. The subfloor must be clean, dry and free from cracks. Any adhesion impairing spots of paint, oil, etc. and any dust should be removed. Please note that asphalt, spillages of oil, impregnating agents and felt pen markings can cause discolouration. When installing on raised floor systems ensure that the panels are in level. Install the tiles randomly over the panels. Preferably use tackifier.
2. Necessary damp-proofing must be in place to prevent harmful moisture coming into contact with the flooring. Follow national rules and regulations with regard to moisture in floor structures. In the absence of such rules and regulations, use the following as guidelines.
3. When laying this product, the RH in any subfloor of normal structural concrete must not exceed 85%. This value only applies to construction moisture. Measuring must always be performed by specially trained personnel.

4. Subfloors of sheet material are assumed to contain an 8% moisture ratio (which corresponds to 40% RH at +20°C), so that no movement occurs that may subsequently cause damage.

In the event of any piping in floors, pipes must be laid so that the flooring material is not continuously exposed to temperatures higher than 30°C, as otherwise discolouration and other changes to the material can occur. This also applies to areas with underfloor heating.

PREPARATIONS

1. Carefully remove all dust and loose particles. When using leveling compound, it is important to achieve the necessary strength and evenness. For best result ± 3 mm/2m and $\pm 1,2$ mm/0,25m or better is recommended.
2. For highly or unevenly absorbing subfloors primer can be used. The primer must be completely dry before installation begins. Installation on existing floor coverings of plastic/linoleum/wood must be assessed on a case by case basis depending on the subfloor condition, installation method and other conditions. With painted subfloors, there is a risk of discolouration.
3. Before installation the material, adhesive and subfloor must be allowed to adjust to room temperature, i.e. a temperature of at least +18°C - 25°C. Make sure that the tiles boxes are on a level surface. The relative air humidity must be 30-60 %. Higher levels of air humidity result in longer drying times and a risk of blistering.

BOLON

Bolon HQ: Industrivägen 12, 523 90 Ulricehamn, Sweden
bolon.com | info@bolon.com | +46 321 530 400

INSTALLATION INSTRUCTIONS: TILES/PLANKS



INSTALLATION

1. Use adhesives designed for vinyl flooring or polyester for tiles with acoustic flooring felt. Normal consumption is around 4 m²/liter of adhesive for absorbent subfloors and around 5 m²/liter for non-absorbent subfloors.
2. Employ wet gluing for absorbent subfloors. With sealed subfloors (e.g. damp proofed subfloor), use late wet gluing to early sticky gluing. Make sure the tiles are in contact with the adhesive by using a joint roller. Tackifier can be handy to use if it is necessary to be able to lift the tiles, e.g. installation on raised floor systems. Installation time depends on various things, including type of subfloor, absorption capacity of subfloor, temperature and air humidity in the room.
3. Use pencil for any markings.
4. For best results, the tiles should be turned one quarter-turn to form a chequered pattern (see figure 1, page 3). It also works to lay the tiles in the same direction. If this is the case, we recommend laying the tiles using a so called brick lay, i.e. offset half a tile to the side (see figure 2, page 3). This gives a more uniform result than laying with a continuous joint, which is also possible (see figure 3, page 3).

Since the material is a woven fabric with natural variations in structure, slight differences in shade may be seen if the tiles are laid in the same direction. Take note of the direction of the arrow on the reverse as per figures 1, 2 and 3, page 3.

MISCELLANEOUS

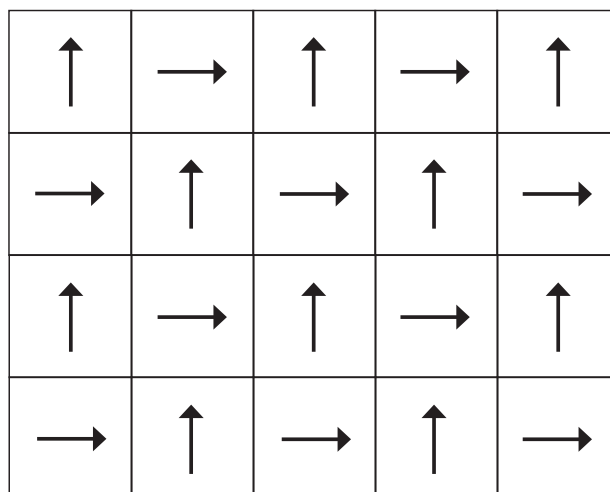
1. If the material is being installed on stairs, mouldings must be used.
2. Wheels on office chairs must be polyamide (hard type, designed for textile flooring).
3. Furniture must have feet of teflon, polythene, stainless steel or similar.
4. Some types of rubber found in wheels of trolleys, entrance mats, etc. can cause discolouration in the form of migration. This type of discolouration cannot be removed.

INSTALLATION INSTRUCTIONS: TILES/PLANKS

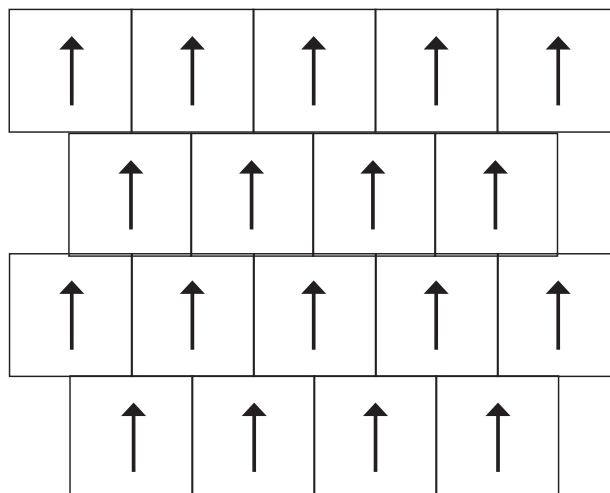
PROCEDURE STEP BY STEP

Bolon tiles/planks should be installed using traditional installation methods for flooring tiles.

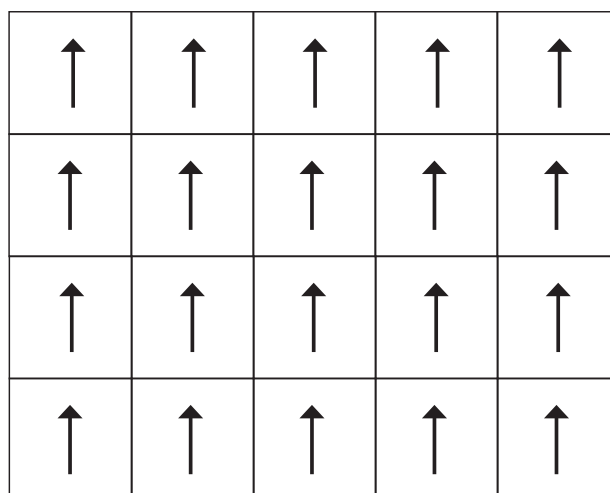
1. It is usual to begin installation from the center of the room. In corridors and small rooms it may be simpler to work from one side to the other and use the center line as a guide mark.
2. The center line can be drawn out as follows: Draw a line from the center between two of the walls. Then draw the second line to form a cross with the other line. To achieve perpendicular the 3:4:5 method can be used.
3. Begin laying tiles at the center point. Work outwards from the first tile, creating a pyramid. Continue in this way until the first quarter of the floor is complete. Be careful to follow the guidelines and ensure that the tiles fit closely together. If the first tiles do not follow the guidelines, this will affect the whole process. Only spread adhesive over an area of a size that can be covered with tiles while the adhesive retains the right consistency.
4. As it takes time to cut edge tiles, it may be best to spread adhesive on the area where complete tiles will be laid first. Once this is done, cut all edge tiles and lay them at the same time.
5. After installation, run a joint roller over all joints length-ways and crossways with a minimum pressure of 75 kg.



1. Tiles turned one quarter-turn to form a chequered pattern.



2. Tiles in a so-called bricklay, i.e. offset half a tile to the side.



3. Tiles with a continuous joint.